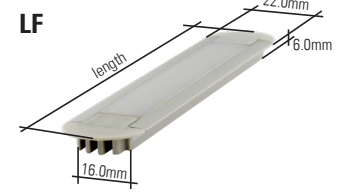
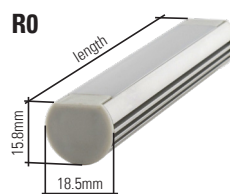
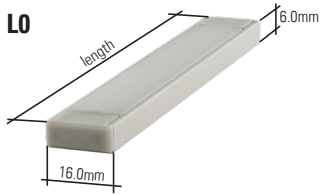
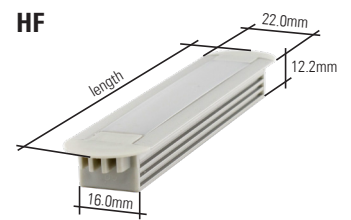
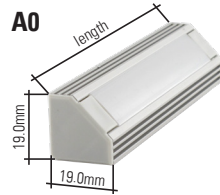
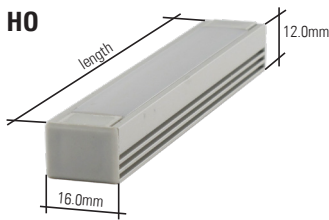


## Specifications overview

Profile H0, LO, RO, A0		Profile HF, LF		Power	Current	No. of LED	Lumen*		
Length of Profile (incl. end-caps)		Length of Profile (incl. end-caps)					warm-white ●	natural-white ○	cold-white ○
				Watt	A		2800-3500K	3800-4500K	5500-6500K
<b>027</b>	270mm	<b>029</b>	290mm	5.8	0.24	28	340	360	360
<b>039</b>	390mm	<b>041</b>	410mm	8.6	0.36	42	500	540	540
<b>046</b>	460mm	<b>048</b>	480mm	10.1	0.42	49	590	630	630
<b>058</b>	580mm	<b>060</b>	600mm	13.0	0.54	63	760	810	810
<b>064</b>	640mm	<b>066</b>	660mm	14.4	0.60	70	840	910	910
<b>082</b>	820mm	<b>084</b>	840mm	18.7	0.78	91	1100	1180	1180
<b>089</b>	890mm	<b>091</b>	910mm	20.0	0.84	98	1180	1270	1270
<b>095</b>	950mm	<b>097</b>	970mm	21.6	0.90	105	1265	1360	1360

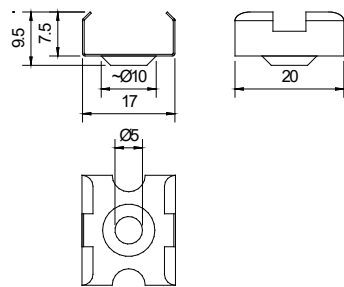
\*The indicated brightness in Lumen is based on the built-in LED's  
The effective brightness output is reduced by the aluminum profile and the cover

### Profile dimensions:

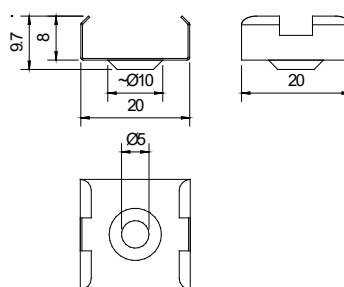


### Mounting Clip dimensions:

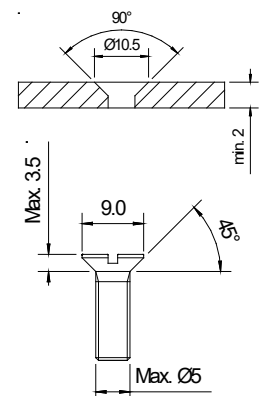
#### Clip for Serie H0, LO, RO



#### Clip for Serie A0



#### Recommended counterbore



1. All dimensions are in millimetres
2. Tolerance is  $\pm 0.25$ mm unless otherwise specified
3. Specifications are subject to change without notice

Please also take note of our **General Information for LED Products**