

## THT LED

## Ø 5mm green & bluish-green

- high luminosity
- long lifetime up to 75'000 hours
- high quality for professional application
- RoHS compliant



Part Number	Old Part Number	Peak Wavelength	Intensity (mcd)			Angle (deg)	Voltage (V)		Lens Colour	Type
			min	typ	max		typ	max		
SLO-234G-00024	L5-G81N-GUV	● 525nm	21650	37700	43300	15°	3.2	3.5	waterclear	1
SLO-234G-00018	L5-G61N-GVW	● 524nm	10500	16000	21000	30°	3.2	3.5	waterclear	2
SLO-234G-00021	L5-G71N-GUV	● 523nm	3320	6500	9200	45°	3.2	3.5	waterclear	3
SLO-234G-00009	L5-G501	● 574nm	80	250	-	44°	2.4	2.8	diffused	4
SLO-234B-00003	L5-BG1N	● 510nm	4200	12000	-	10°	3.5	4.0	waterclear	5
SLO-234B-00001	L5-BG1G	● 498nm	3200	5200	9200	30°	3.5	4.0	waterclear	6

### Electro-Optical-Characteristics Ta=25°C, Forward Current: IF Typical = 20mA,

1/10 Duty Cycle, 10ms Pulse Width: up to 110mA, depending on type number.

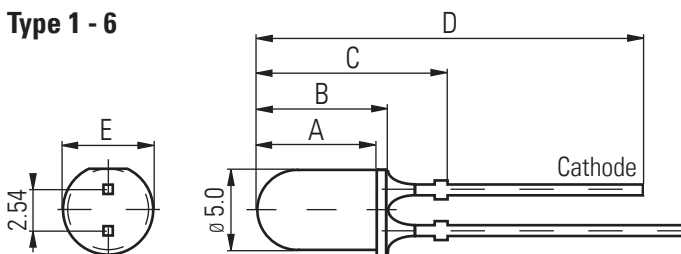
Storage Temp. -40 ~+100 (°C) Operating Temp. -30 ~+85 (°C)

Detailed data sheets are available on request

Packaging: 500pcs/bulk

### Dimensions (mm)

#### Type 1 - 6



Type	A	B	C	D	E
1	7.6	8.6	12.4	28.9	5.6
2	7.3	8.3	12.1	28.6	5.6
3	6.6	7.6	11.3	27.8	5.6
4	7.7	8.7	NA	31.2	5.9
5	7.9	8.9	13.2	29.7	5.6
6	7.1	8.3	12.1	28.6	5.6

1. All dimensions are in millimetres

2. Tolerance is ±0.25mm unless otherwise specified

3. Specifications are subject to change without notice