

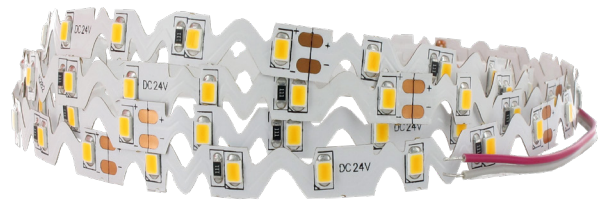
24V Flexiprint curved

Standard bright (2835)

FPC1-x01D-250

Specifications





Voltage	24V
Current	0.75A
Wattage	7.2W/m
Number of LED's	150pcs
Length of stripe	2.5m
Operating temperature	-15°~+40°C
Storage temperature	-40°~+80°C
Viewing angle	120°
CE/RoHS compliant	



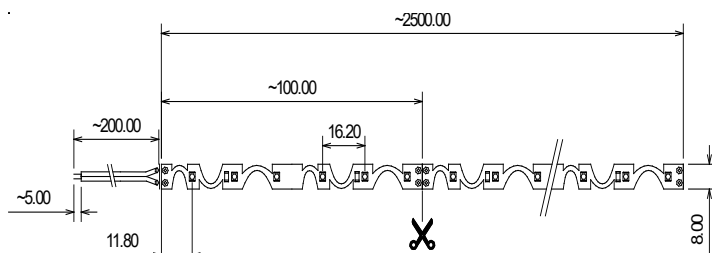
Benefits

Adhesive tape on backside
cuttable every ~100mm

Electrical and optical characteristics (Ta=25°C)

Part number	Colour	Wavelength / CCT	Intensity lm (typ.)	EEC
FPC1-H01D-250	 warm-white	2600-2800°K	1500	A
FPC1-N01D-250	 warm-white	2800-3100°K	1500	A+
FPC1-S01D-250	 natural-white	3800-5000°K	1625	A+
FPC1-W01D-250	 white	5500-6700°K	1750	A+

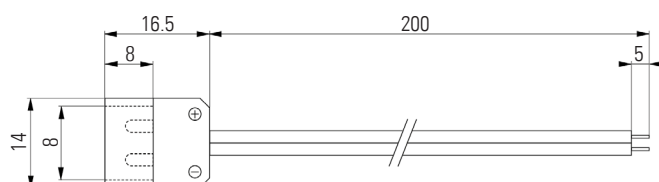
Dimensions



Thickness: 2.4 mm

Additional:

Quick connector for a solderless connection with the LED stripe.
Part-no.: SLO-C310-00001 (more details on page 47)



1. All dimensions are in millimetres
2. Tolerance is ±0.50mm unless otherwise specified
3. Length tolerance ±1%
4. Specifications are subject to change without notice

Please also take note of our **General Information for Flexiprint and LED Modules**