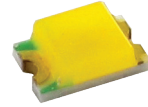


## SMD LED

## Type 0805

- top LED
- dimension 2.0x1.25x0.68mm
- viewing angle: 120°
- RoHS compliant



Part Number	Dominate Wavelength	Intensity (mcd)		Angle (deg)	Voltage (V)		Lens Colour
		min	typ		typ	max	
SMD-B0805-02	466nm	160	210	120°	3.0	3.2	waterclear
SMD-G0805-02	520nm	355	550	120°	3.0	3.2	waterclear
SMD-N0805-02	3000-3500°K	600	800	120°	3.0	3.2	yellow diffused
SMD-R0805-02	637nm	70	110	120°	1.6	1.9	waterclear
SMD-W0805-02	6000-6500°K	600	800	120°	3.0	3.2	waterclear
SMD-Y0805-02	595nm	160	230	120°	1.8	2.0	yellow diffused

### Electro-Optical-Characteristics Ta=25°C, Forward Current: IF Typical = 20mA,

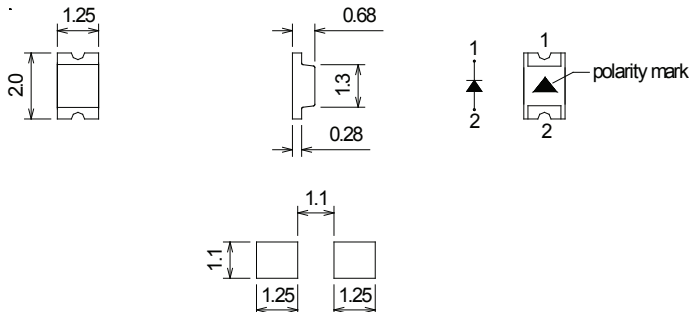
1/10 Duty Cycle, 10ms Pulse Width: up to 180mA, depending on colour.

Storage Temp. -40 ~+100 (°C) Operating Temp. -40 ~+85 (°C)

Detailed data sheets are available on request

Packaging: 3000pcs/reel

### Dimensions (mm)



1. All dimensions are in millimetres
2. Tolerance is  $\pm 0.25$ mm unless otherwise specified
2. Specifications are subject to change without notice